

# Bassoon

# Classic Games Medley

arr. J. Morley-Smith

"Super Mario Theme"

**A** ♩ = 200

## Rubato

The musical score for the bass line of 'The Rose Tree' is written on a single staff. It begins with a 2/2 time signature, followed by a 3/4 time signature, and then a 4/4 time signature. The key signature is one flat (B-flat). The melody starts with a whole rest, followed by a half note B-flat, a quarter note A, and a quarter note G. This is followed by a half note F, a quarter note E, and a quarter note D. The melody then continues with a half note C, a quarter note B, and a quarter note A. The final measure of the snippet shows a half note G, a quarter note F, and a quarter note E. The dynamics are marked as *mf* (mezzo-forte) and *f* (forte). There are also some performance markings, including a wedge-shaped accent and a fermata over the first measure.

7

[illegible]

13

The bass line of 'The Rose Tree' is written on a single staff with a bass clef. It consists of five measures. The first measure has a whole rest. The second measure has a quarter note G2. The third measure has a quarter note G2, a quarter rest, and a quarter note A2. The fourth measure has a quarter note G2, a quarter note F2, a quarter rest, and a quarter note G2. The fifth measure has a quarter note G2, a quarter note F2, a quarter note E2, and a quarter note D2.

18 **B**

The bass line of 'The Rose Tree' is written on a single staff with a bass clef. It consists of six measures. The first measure has a whole note G2. The second measure has a whole note G2. The third measure has a whole note G2. The fourth measure has a whole note G2. The fifth measure has a whole note G2. The sixth measure has a whole note G2.

24

**C**

The bass line of 'The Rose Tree' is written on a single staff in bass clef. It consists of six measures. The first measure has a quarter note G2, a quarter rest, and a half rest. The second measure has a quarter note G2, a quarter note F2, and a half rest. The third measure has a quarter note E2, a quarter note D2, and a half rest. The fourth measure has a quarter note C2, a quarter note B1, and a half rest. The fifth measure has a quarter note A1, a quarter note G1, and a half rest. The sixth measure has a quarter note F1, a quarter note E1, and a half rest.

30

**rall.** - - - -

The bass line of 'The Rose Tree' is written on a single staff in bass clef. The key signature has one flat (B-flat). The melody consists of five measures: 1. B-flat, quarter rest, eighth B-flat, eighth G, quarter B-flat. 2. B-flat, quarter rest, eighth A, eighth G, quarter F. 3. F, quarter rest, eighth E, eighth D, quarter C. 4. B-flat, quarter rest, eighth B-flat, eighth A, quarter G. 5. G, quarter rest, eighth F, eighth E, quarter D.

## "The Legend Of Zelda - Ocarina of Time"

35 -

**D** ♩ = 82

44

The bass line of 'The Rose Tree' is written in 3/4 time. It begins with a whole note G2, followed by a half note F2, and then a quarter note E2. The melody then consists of four measures, each containing a triplet of eighth notes: G2-A2-B2, A2-G2-F2, G2-A2-B2, and A2-G2-F2. The final note of the piece is a whole note G2.

V.S.

50 accel. - - - -

3 <sup>♮</sup>Sonic The Hedgehog" 3

54  $\text{♩} = 152$  E

8

66

8

"Angry Birds"

80 F  $\text{♩} = 120$

5

87

90 G

94

97

100

$\text{♩} = 100$

103 H "Mario Bros Underworld Theme"

6/4

111



115

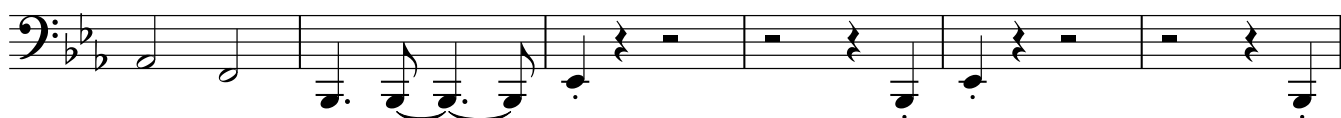
**I**

♩ = 120

"Super Mario Galaxy Theme"



121

**J**

127



131



135

**K**

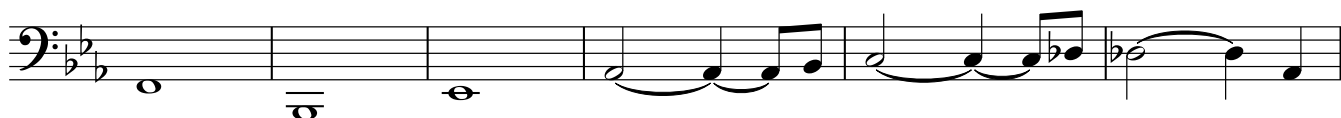
144

rall.

♩ = 96

**L**

152



158



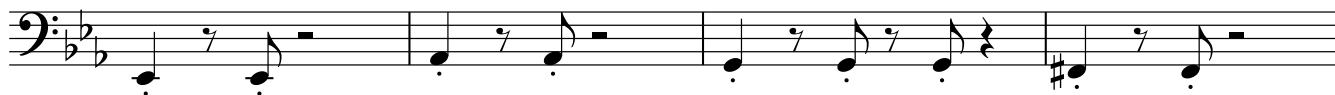
V.S.

"Gusty Garden Galaxy"

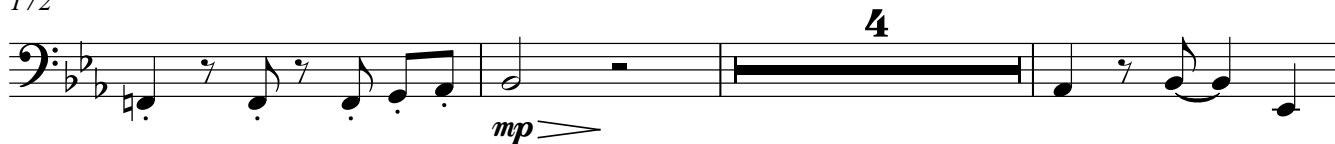
163 **M** ♩ = 136



168



172



179 **N**



184



189



"Super Mario Galaxy Theme - Reprise"

193 **O** ♩ = 136



197



201



205



209

**P**

213



217

**2**